



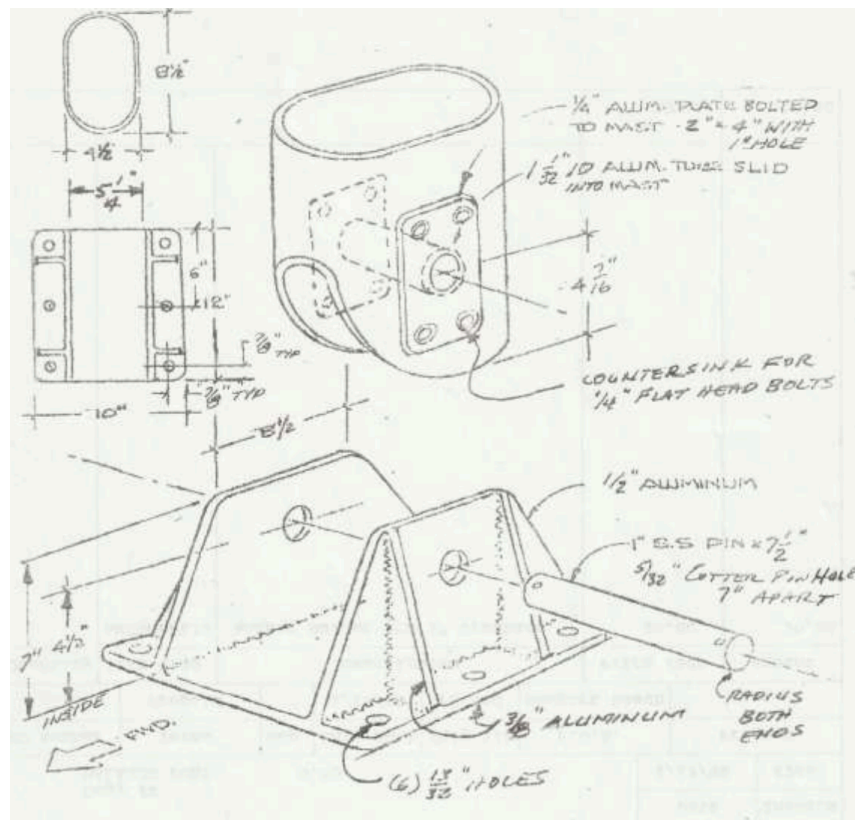
## TABERNACLE MAST BASE CONVERSION

If you have the standard fixed base on you Westsail 28 or 32 mast, and want to convert to a tabernacle base, we do have the tabernacle mast base kit available. A welded aluminum tabernacle base is supplied to replace the existing fixed base, and the mast conversion is a bolt-on assembly, and does not require welding on the mast. The bottom of the mast must be cut with a radius on the forward side, and holes drilled for the axle rod and bolts. A 1" OD stainless axle is supplied, as well as reinforcing plates to be bolted on each side of the mast, and an aluminum tube inserted inside the mast to hold the walls apart. The base should be bolted on to the cabin top, and a hole drilled with a plastic tube installed for the wires to come through, unless the existing one can be used. Use a good grade non-seize compound on the stainless pin when it is installed in the aluminum tube when you step the mast.

Parts available:

Complete mast tabernacle conversion kit for Westsail 32

Email or call for an exact quote - [randy@westsailparts.com](mailto:randy@westsailparts.com) 415 254 7296



WESTSAIL PARTS COMPANY

[www.westsailparts.com](http://www.westsailparts.com)